



QuickPort Duo Clone

USB 3.1 Type C



Manual

TABLE OF CONTENTS

1. Features	3
2. Software Properties	3
3. Specifications	3
3.1. General	3
3.2. Compatibility	4
4. Package Contents	4
5. QuickPort Duo Clone USB 3.1 Type C Overview	5
6. Connecting to the PC or Mac	5
7. Standalone Clone Function	6
8. Installing and Activating the Software	7
8.1. FlashCopy	7
8.2. CloneDrive2	8
9. Software	9
9.1. FlashCopy	9
9.2. CloneDrive2	10

Dear Customer,

Thank you for your purchase of this new Sharkoon product. To ensure a long service life and full functionality, we recommend that you read this manual thoroughly.

SHARKOON Technologies

www.sharkoon.com

1. Features

- Suitable for 2.5" and 3.5" SATA HDD/SSDs
- Enables the direct connection of two HDDs/SSDs to a PC or Mac
- Lightning-fast USB 3.1 connection with up to 10 Gbit/s
- Included English language FlashCopy and CloneDrive2 software for Windows
- Standalone clone function
- LED indicator for monitoring cloning process
- Supported operating systems: Windows 7/8/10, Mac OS X

2. Software Properties

- The enclosed software allows, additional to the software-independent standalone clone function, copying and cloning of PC installed hard drives.
- Using the English language FlashCopy software, data can be transferred faster from hard drive to hard drive, due to the chip of the QuickPort Duo Clone USB 3.1 Type C being controlled directly without detouring through the operating system.
- The English language CloneDrive2 software skips empty hard drive sectors during the cloning process, increasing the speed of the clone process and larger hard drives can be cloned onto smaller ones, as long as there is enough capacity for the raw data.

3. Specifications

3.1 General

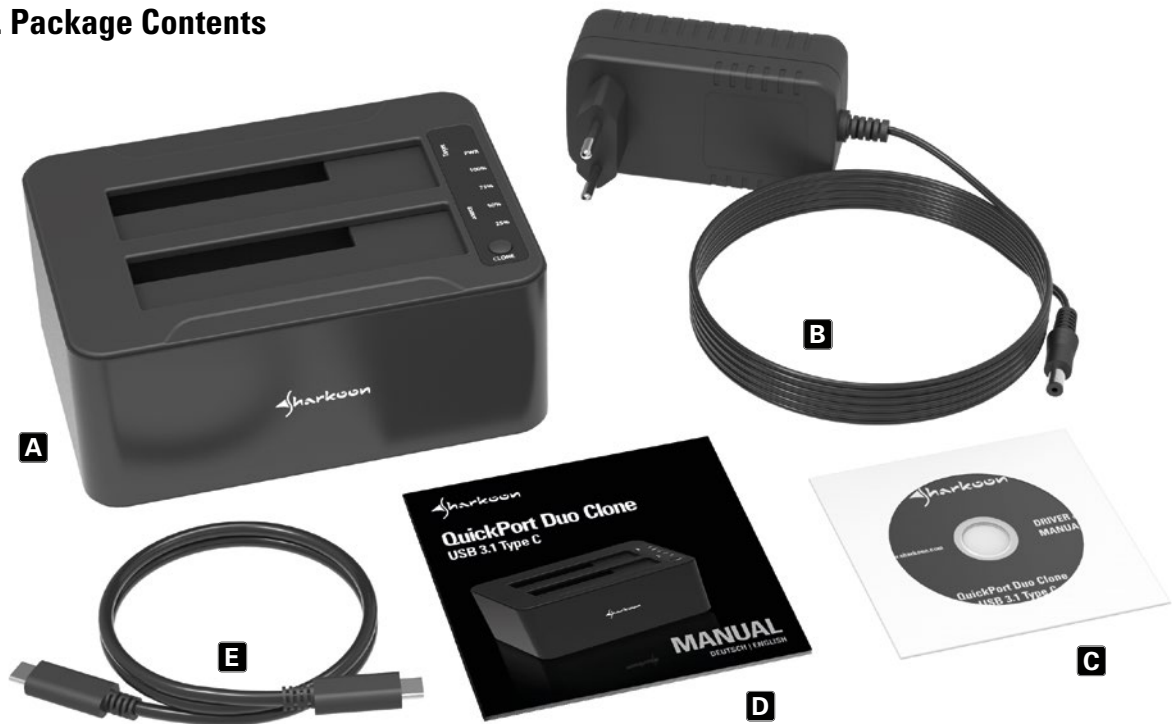
External Interface	USB 3.1 (Type C Port)
Internal Interface SATA	2.5", 3.5"
Drive Bays	2
Max. Data Transfer Rate USB	10 Gbit/s
Clone Function	✓
On/Off Switch	✓
Status LED	✓
Cable	USB 3.1 (Type C Plug to Type C Plug)
USB Cable Length	100 cm
Power Supply	Power Adapter
Weight without Cable	399 g
Dimensions (L x W x H)	108 x 151 x 63 mm



3.2 Compatibility

SATA Compatibility	Revision 1.0, 2.0, 3.0
Native SATA Revision 3.0 Support	✓
Plug & Play	✓
Supported Operating Systems	Windows 7/8/10, Mac OS X

4. Package Contents



A QuickPort Duo Clone USB 3.1 Type C

B Power adapter

C CD with software and manual

D Manual

E USB 3.1 cable (Type C plug to Type C plug)

Note:

If you are missing any of the items listed above, please contact our customer service immediately:

support@sharkoon.com (Europe)

support@sharkoon.com.tw (International)



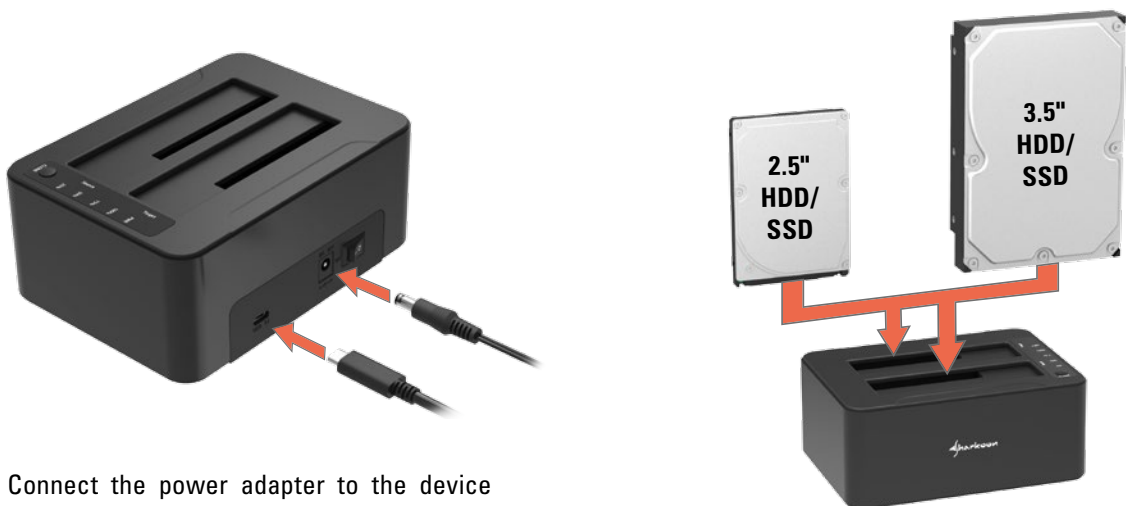
5. QuickPort Duo Clone USB 3.1 Type C Overview



- 1** Target drive bay
- 2** Source drive bay
- 3** Target HDD LED
- 4** Power LED
- 5** Progress indicator

- 6** Source HDD LED
- 7** Clone button
- 8** USB 3.1 connector (Type C port)
- 9** Power inlet
- 10** On/off switch

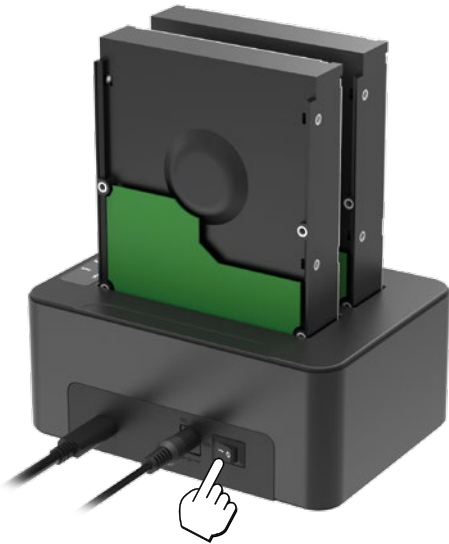
6. Connecting to the PC or Mac



Connect the power adapter to the device and power outlet. Then connect the included USB 3.1 cable (Type C plug to Type C plug) to an available Type C port on your computer and the Type C port on the QuickPort.

Gently insert your HDDs or SSDs into either the target and/or source drive bay.





Turn on the device. Since the QuickPort Duo Clone USB 3.1 Type C operating system is automatically recognized, it is now ready for operation.

7. Standalone Clone Function

Using the standalone clone function, data from the HDD inserted into the source drive bay can be cloned to the HDD inserted into the target drive bay without the use of software.

Please verify that the data on the target HDD is no longer needed. **During cloning, data will be completely deleted.** Ensure that there is enough memory on the target HDD to store the data from the source HDD. If there is not enough data capacity, the cloning process will not start. In this situation, the source and target HDD LEDs will illuminate red.



The standalone clone function is completely self-sufficient. Therefore, ensure that the device is not connected to the computer via the USB cable before cloning. Use the included software to clone a HDD installed into a PC (see 9. Software).

If not already done so, after verifying available memory space on the HDD, gently insert the source and target HDDs into their respective drive bays and turn the device on. The green power LED will illuminate. Once the hard drives have booted, the source and target HDD LEDs will also illuminate. The cloning process can now begin.





Press and hold the clone button for three seconds, until all status LEDs begin to blink. Another quick press on the clone button while the status LEDs are blinking starts the cloning process. The LEDs will continuously blink during the cloning process. The progress can be read in four steps, from 25% to 100%, on the progress indicator. The cloning process is complete once both the source HDD LED and target HDD LED are permanently illuminated.

Note:

The cloning process is used to clone the partition ID of the source HDD to the target HDD. Therefore, only one hard drive is displayed by the system when connected to the computer.

8. Installing and Activating the Software

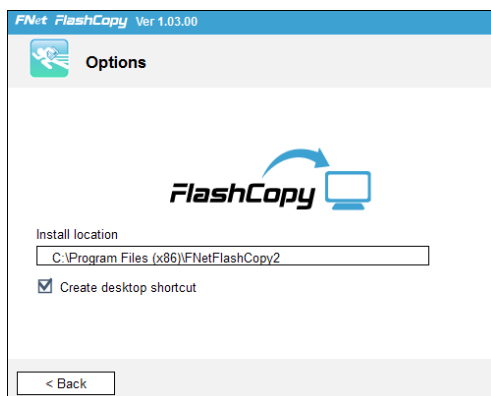
The provided English-language software supports Windows 7/8/10.

1. To install, insert the software CD into the CD/DVD/BD drive or download the latest software version from our website www.sharkoon.com. In the case of the latter, skip the following steps 2 and 3.
2. Open the drive bay that contains the CD/DVD/BD drive (e. g. D:\).
3. Open the displayed "Software" folder.

8.1. FlashCopy



To install the English-language FlashCopy software, start "FlashCopy_Setup.exe". The Setup Wizard will open.



Prior to installing, the option is available to change the default installation directory. If necessary, click "Options" and then select a new installation directory by clicking on "Install location".

When the "Create desktop shortcut" box is checked, a program shortcut is created on the desktop after installation. Uncheck the option, if no program shortcut to be created is desired.





The software cannot be installed until the license agreement has been accepted. Please check the box "I have read and accepted the licensing agreement," which confirms you have read and accepted the license agreement. Then click "Install" to download the software to the desired installation directory, or press "Quit" to abort the installation.



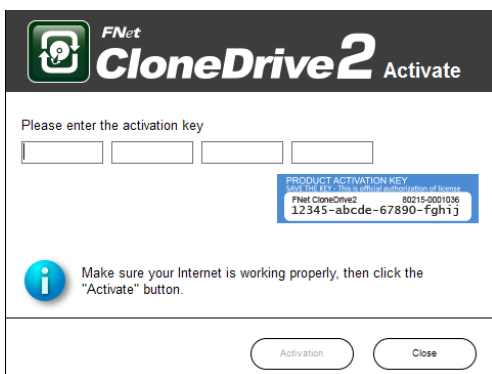
Once finished, click "Done" to complete the Setup Wizard.



The FlashCopy software must be activated after its initial program launch. Enter the product key on the bottom of the device into the provided field and then click "Activation". Once activation is successful, the software can be used.

Note:

When activating the software, ensure that an internet connection exists and that the QuickPort is connected to the PC and ready for operation.



8.2. CloneDrive2

The English-language CloneDrive2 software does not have to be installed and is launched by directly double-clicking on the .exe file. Copy this before the initial program launch into a suitable directory on your PC. Enter the product key on the bottom of the device into the provided field and then click "Activation". Once activation is successful, the software can be used.

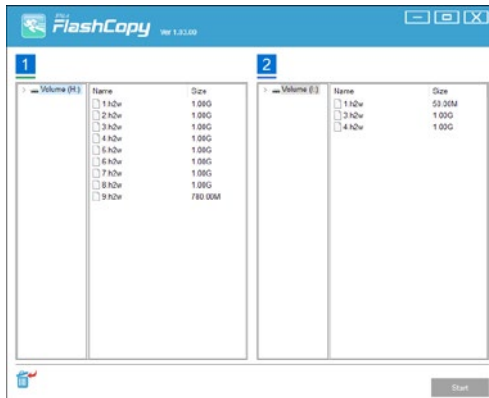
Note:

When activating the software, ensure that an internet connection exists and that the QuickPort is connected to the PC and ready for operation.



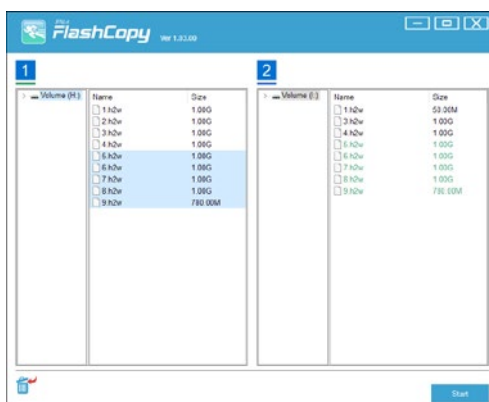
9. Software

9.1. FlashCopy

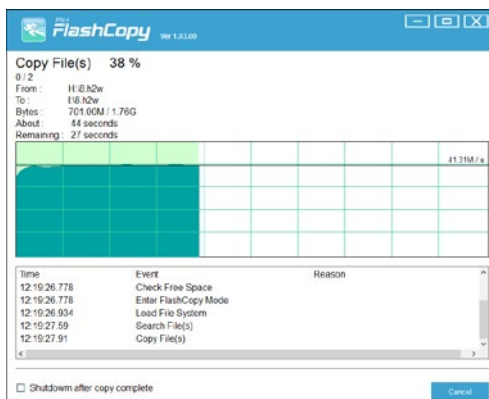


The English-language FlashCopy software enables faster data copying, due to the chip of the QuickPort not being de-toured through the operating system.

To launch the program, double-click the desktop shortcut or open it from the Start menu. The data from the hard drives connected to the QuickPort will appear in the respective window for both the source and target drive bay. The source drive bay is marked with the number 1, the target drive bay with the number 2.

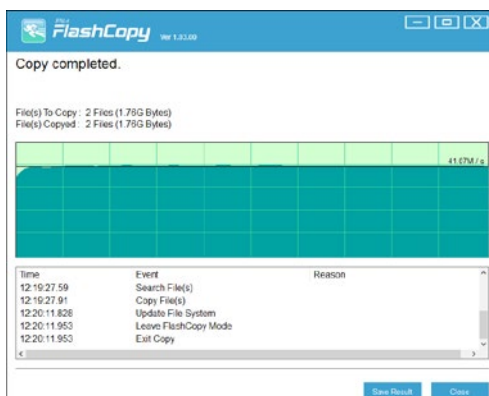


Now select the data to be copied. These can be moved from the source to the target HDD via drag & drop, however the actual copying process will not yet start. The possibility still remains to check the data to be copied beforehand and remove, if necessary, temporarily moved files and folders. Temporary files and folders are shown in light green and can be removed, via drag & drop, by dragging them to the trash can icon. Click on "Start" to begin the copying process.



After starting, a window displaying current information on the copying progress will appear. In addition, it is also possible to select whether the PC should automatically shut-down after the copying process has been completed. To do this, check the "Shutdown after copy complete" box. Click "Cancel" to cancel the copying process.

After copying the data, click on "Save Result" to save the displayed information as a text file on the PC.



Click "Close" to close the main window and go back to the main menu.



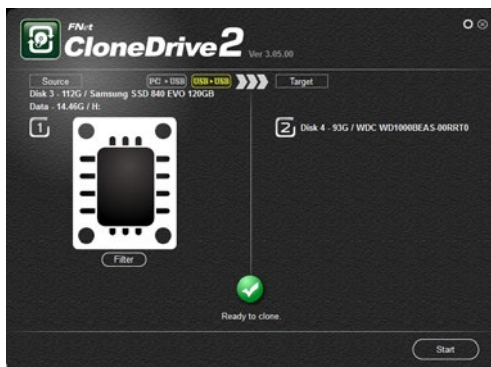
9.2. CloneDrive2

The English-language CloneDrive2 software skips empty hard drive sectors during the clone process, increasing the speed of the clone process and larger hard drives can be cloned to smaller ones as long as the actual data amount of the source HDD does not exceed the data capacity of the target HDD. The partitioned size of the target HDD is automatically adjusted by the software to the maximum memory capacity regardless of the data to be cloned.

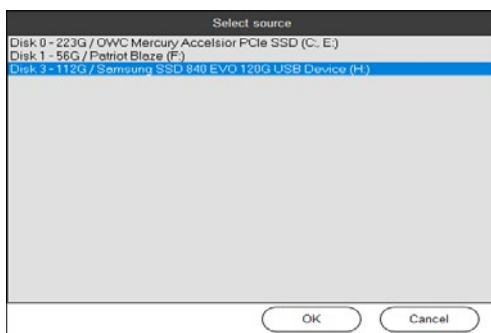
CloneDrive2 automatically detects the hard drives inserted into the QuickPort and displays the respective memory information for the source and target drive bays. It is then possible to select whether the cloning process should be from PC to USB, or from USB to USB.



When cloning from PC to USB, a hard drive installed into a PC or an additional hard drive connected to a PC can be selected as the source, while the hard drive inserted into the QuickPort can serve as the target.



When cloning from USB to USB, as with the standalone clone function, the hard drive inserted into the source drive bay of the QuickPort will serve as the source. The hard drive inserted into the target drive bay will serve as the target during the cloning process.

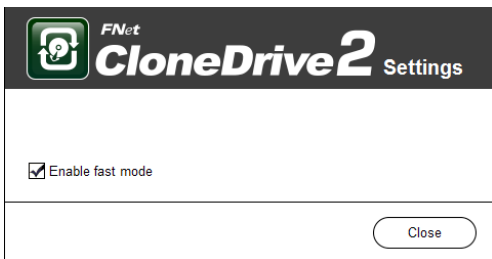
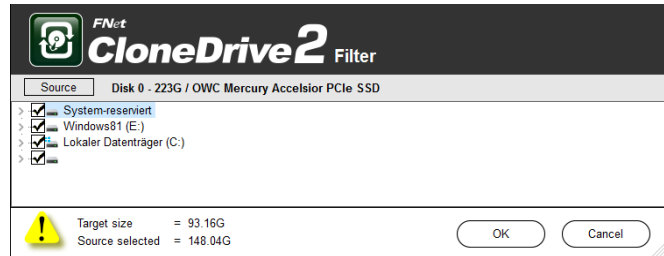


Click on "Source" at any time to change the source of the cloning process. Simply select a new source from the listed hard drives and click "OK" to confirm. The new source automatically changes the selected cloning mode.

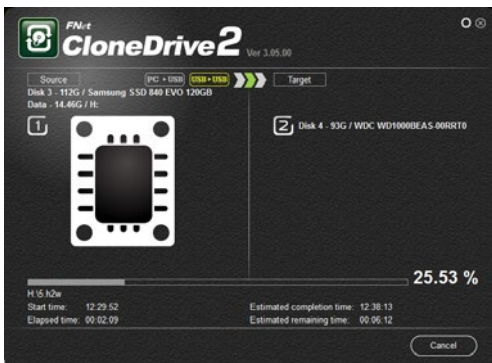




Click "Filter" if individual files or whole directories are to be excluded from the cloning process, or if the data capacity of a hard drive is exceeded, the data to be cloned is adjusted in a separate window. Simply selected all files and folders that should not be cloned.



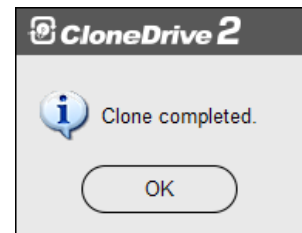
Click on the gears icon to bring up the settings. Within here, fast mode can be selected or deselected to accelerate the cloning process. Click "Close" to close the window and return to the main menu of the software.



Press "Start" to begin the cloning process.

Similar to FlashCopy, current information about the cloning process is displayed. Click "Cancel" to cancel the cloning process.

Cloning process is complete once the status message "Clone complete" appears. Click "OK" to confirm.



Legal Disclaimer:

For potential loss of data, especially due to inappropriate handling, SHARKOON assumes no liability. All named products and descriptions are trademarks and/or registered trademarks of the respective manufacturers and are accepted as protected. As a continuing policy of product improvement at SHARKOON, the design and specifications are subject to change without prior notice. National product specifications may vary. The legal rights of the enclosed software belong to the respective owner. Please observe the license terms of the manufacturer before using the software. All rights reserved especially (also in extracts) for translation, reprinting, reproduction by copying or other technical means. Infringements will lead to compensation. All rights reserved especially in case of assignment of patent or utility patent. Means of delivery and technical modifications reserved.

Disposal of your old product:

Your product is designed and manufactured with high quality materials and components, which can be recycled and reused.



When this crossed-out wheeled bin symbol is attached to a product, it means the product is covered by the European Directive 2012/19/EU.

Please be informed about the local separate collection system for electrical and electronic products.

Please act according to your local rules and do not dispose of your old products with your normal household waste. The correct disposal of your old product will help prevent potential negative consequences to the environment and human health.

SHARKOON Technologies GmbH
Siemensstraße 38
35440 Linden
Germany

© SHARKOON Technologies 2017

info@sharkoon.com
www.sharkoon.com

