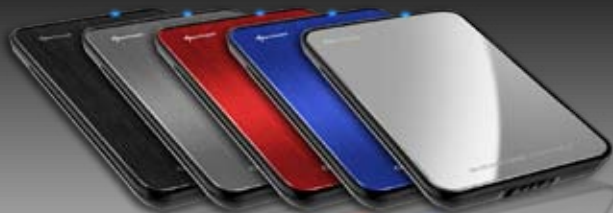




**QUICKSTORE** PORTABLE **USB 3.0**

Manual



# Content

1. Features
2. Specifications
3. Parts and accessory
4. The device at a glance
5. Installing a SATA hard disk drive
6. Installing the software
7. The backup software
  - 7.1 Start
  - 7.2 "Quick Launch"
  - 7.3 Backup settings
  - 7.4 File manager
  - 7.5. Program settings

Dear customer!

Congratulations for purchasing this premium quality SHARKOON product.

For a long life time and to take full advantage of this product we recommend that you read this manual completely.

Have a good time with our product!

**SHARKOON Technologies GmbH**

## 1. Features

- Suitable for 2.5" SATA hard disk drives (9.5 mm height)
- Tool free assembly
- "One Click Backup" function (only Windows)
- Backup software included
- No drivers needed for Windows, Mac and Linux

## 2. Specifications

- External interface: micro USB3.0 (compatible to USB2.0 and USB1.x)
- Internal interface: SATA (Version I and II)
- Data transfer rate: max. 5 Gbit/s
- Dimensions: 135 x 85 x 14 mm (L x W x H)
- Weight: ~51 g

### 3. Parts and accessory



- QuickStore Portable USB3.0 (A)
- USB3.0 cable (B)
- Quick start manual (C)
- Tools CD incl. backup software and extensive manual (PDF / D)

**Note:**

*If you are missing any of the items listed above, please contact our customer service via e-mail at [support@sharkoon.com](mailto:support@sharkoon.com) or call: + 49 (0) 6403 – 775 6100.*

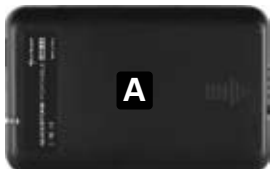
## 4. The device at a glance



- A – QuickStore Portable in respective version
- B – Backup button: pressing this button starts a backup process with the pre-defined settings (see chapter 6)



- A – Case cover lock



- A – Case cover



- A – SATA connector (data and power)
- B – HDD mounting bay (for one 2.5"-SATA HDD)

## 5. Installing a SATA hard disk drive

1. Open the case cover lock (fig. 1).



fig. 1

2. Remove the case cover from the case body (fig. 2).

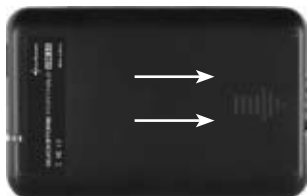


fig. 2

3. Slide a 2.5" SATA HDD into the HDD mounting bay (fig. 3).



fig. 3

4. Place the case cover back onto the case body (fig. 4).

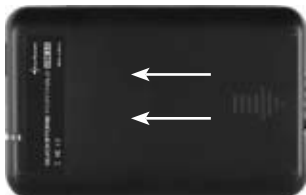


fig. 4

5. Close the lock (fig. 5).



fig. 5

6. Use the included USB3.0 cable to connect the device's Mini USB3.0 connector to a USB3.0 connector of your PC/laptop.
7. The QuickStore Portable will automatically be recognized by the operating system and all required drivers will be installed. The device is now ready.

*Note:*

*Brand new HDDs built into the case must be partitioned and formatted. Proceed as described below (e.g. Windows XP): Start / Settings / Control Panel / Administrative Tools / Computer Management / Disk Management. Click the respective HDD with the right mouse button and choose partition/format.*

## 6. Installing the software

1. Insert the included Driver&Tools CD into your CD/DVD drive.
2. Choose your CD/DVD drive (e.g. D:\).



Lokaler Datenträger (C:)



BACKUP (E:)

### Geräte mit Wechselmedien

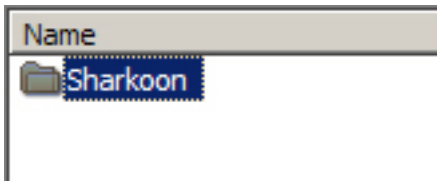


3½-Diskette (A:)



SATA Backup (D:)

3. Open the folder "Sharkoon"





4. Start "Setup.exe"; the following window will open up (fig. 1). Click "Install" to install the backup software or "Quit" to cancel the installation.



fig. 1

5. Accept the license agreement (fig. 2) by clicking the button "Agree". "Back" will get you to the previous installation step, "Quit" cancels the installation.

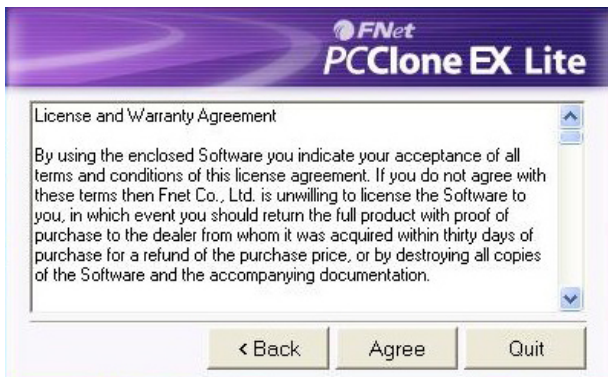


fig. 2

6. Confirm the destination path for the installation by clicking "Install"; "Back" will get you to the previous installation step, "Quit" cancels the installation. With "Create Desktop Shortcut" you can decide whether you want a program icon to be created on your desktop or not (fig. 3).



fig. 3

7. Complete the installation by clicking "OK" (fig. 4).



fig. 4

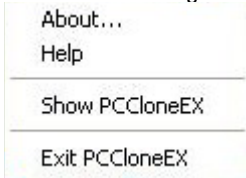
- After the installation is completed the following icon will appear in your task bar:



## 7. The backup software

### 7.1. Start

- Click the icon in your task bar with the right mouse button once. The following context menu will open up:



- "About..." shows you information about the software (fig. 5).



fig. 5

3. "Help" starts the help program of the backup software (fig. 6).

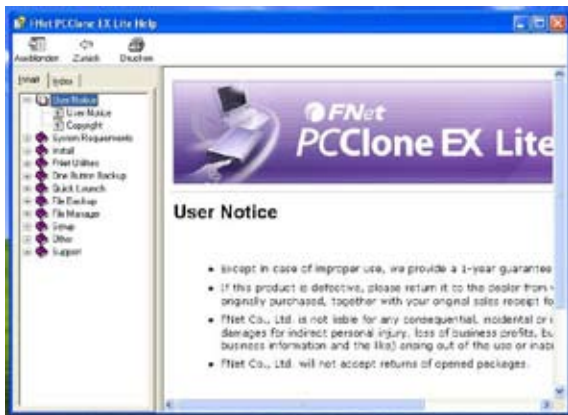
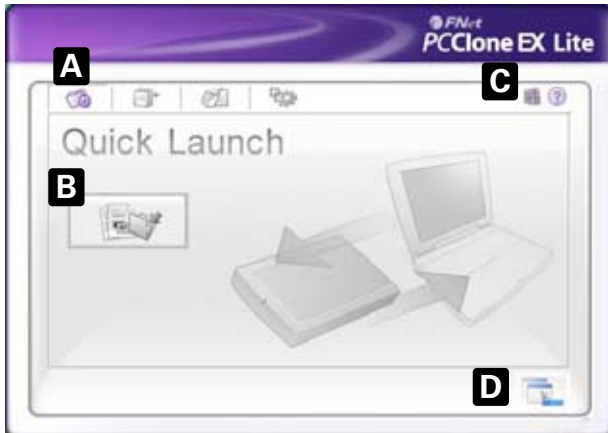


fig. 6

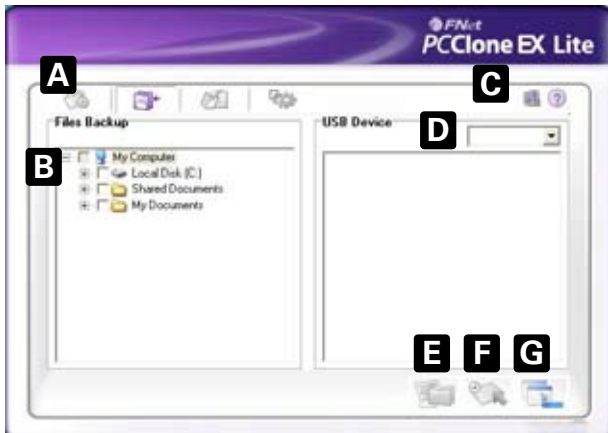
4. "Exit PCCloneEX" quits the program (the icon will be removed from your task bar).
5. "Show PCCloneEX" starts the backup program. Alternatively you may start the program by double-clicking (left mouse button) the icon.

## 7.2. "Quick Launch"



- A – Menu bar
- B – Start the data backup by clicking the button.
- C – These icons are used to start the program help and to show some information about the program.
- D – Clicking this button minimizes the window. To completely quit the program see above chapter 6.1. No. 4.

## 7.3. Backup settings

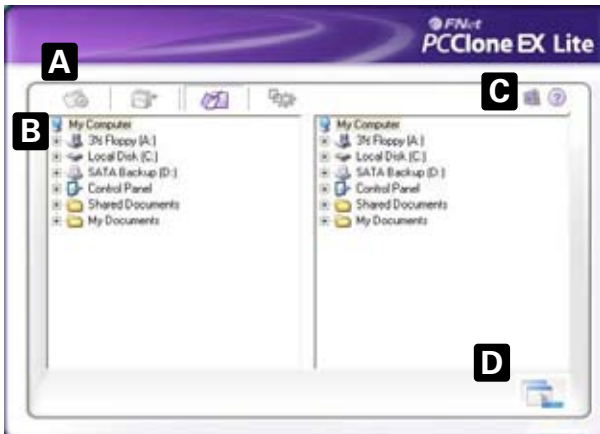


- A – Menu bar
- B – All folders of your system are shown here. Choose the folders that will be copied during a backup, by ticking the respective checkboxes.
- C – These icons are used to start the program help and to show some information about the program.
- D – Select the external target device from the dropdown menu.
- E – Start the backup by clicking the button.
- F – Restore already existing backup files from the external (backup) drive, by clicking this button.
- G – Clicking this button minimizes the window.

### Note:

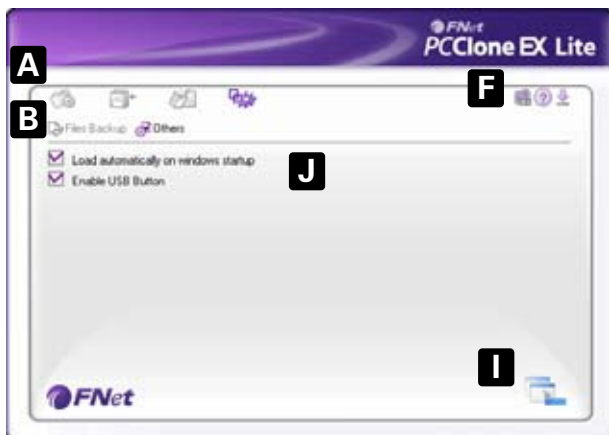
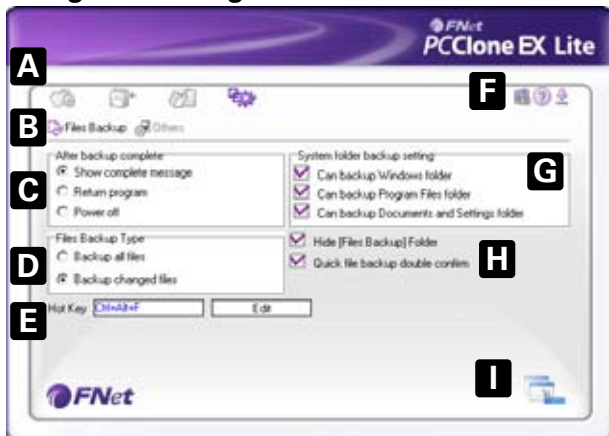
*The backup files are copied to the (hidden) folder "Fnet" on the target device. This folder must not be deleted!*

## 7.4. File manager



- A – Menu bar
- B – All files of your system are shown here. Use the included file manager to manage your files.
- C – These icons are used to start the program help and to show some information about the program.
- D – Clicking this button minimizes the window.

## 7.5. Program settings





- A – Menu bar
- B – Select between the windows "Files Backup" and "Others".
- C – Decide what shall happen after completing the backup.
- D – Choose whether all or only changed files shall be secured.
- E – Determine a hot key to start the backup.
- F – These icons are used to start the program help and to show some information about the program.
- G – Select which system folders shall be included into the backup.
- H – Determine whether the Files Backup folder shall be hidden and if the quick file backup shall be double confirmed or not.
- I – Clicking this button minimizes the window.
- J – Decide if the program shall be started during system boot-up.

**Warning:**

For potential loss of data, especially due to inappropriate handling, SHARKOON assumes no liability.

All named products and descriptions are trademarks and/or registered trademarks of the respective manufacturers and are accepted as protected.

As a continuing policy of product improvement at SHARKOON, the design and specifications are subject to change without prior notice. National product specifications may vary.

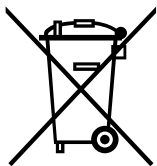
The legal rights of the enclosed software belong to the respective owner. Please observe the license terms of the manufacturer before using the software.

All rights reserved especially (also in extracts) for translation, reprinting, reproduction by copying or other technical means. Infringements will lead to compensation.

All rights reserved especially in case of assignation of patent or utility patent. Means of delivery and technical modifications reserved.

#### Disposal of your old product

Your product is designed and manufactured with high quality materials and components, which can be recycled and reused.



When this crossed-out wheeled bin symbol is attached to a product, it means the product is covered by the European Directive 2002/96/EC.

Please be informed about the local separate collection system for electrical and electronic products.

Please act according to your local rules and do not dispose of your old products with your normal household waste. The correct disposal of your old product will help prevent potential negative consequences to the environment and human health.

© **SHARKOON Technologies GmbH 2010**

[www.sharkoon.com](http://www.sharkoon.com)